



— RAMESHWARAM —

IVAAN

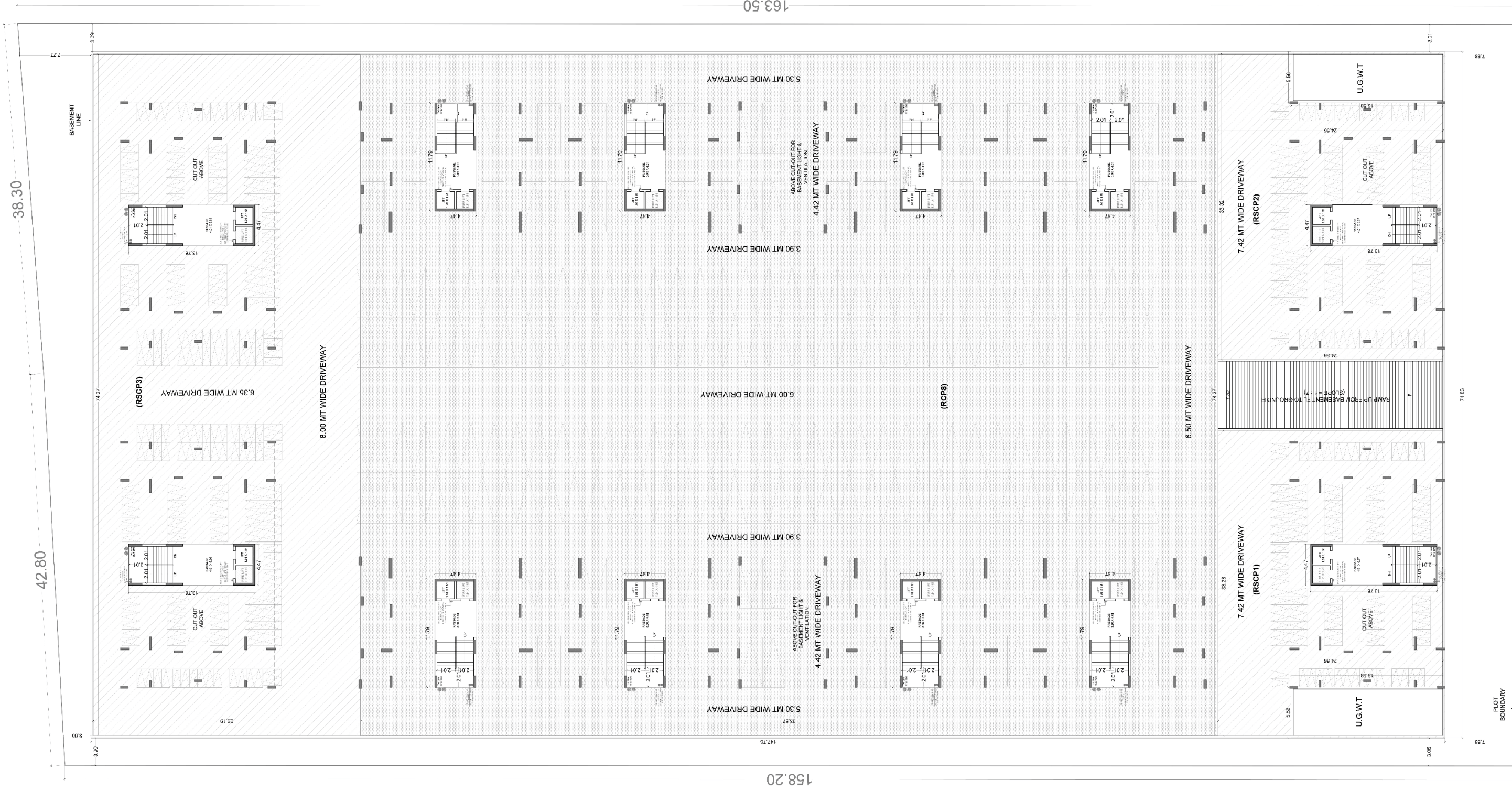
PHASE-1

2 & 3 BHK
LUXURIOUS LIVING



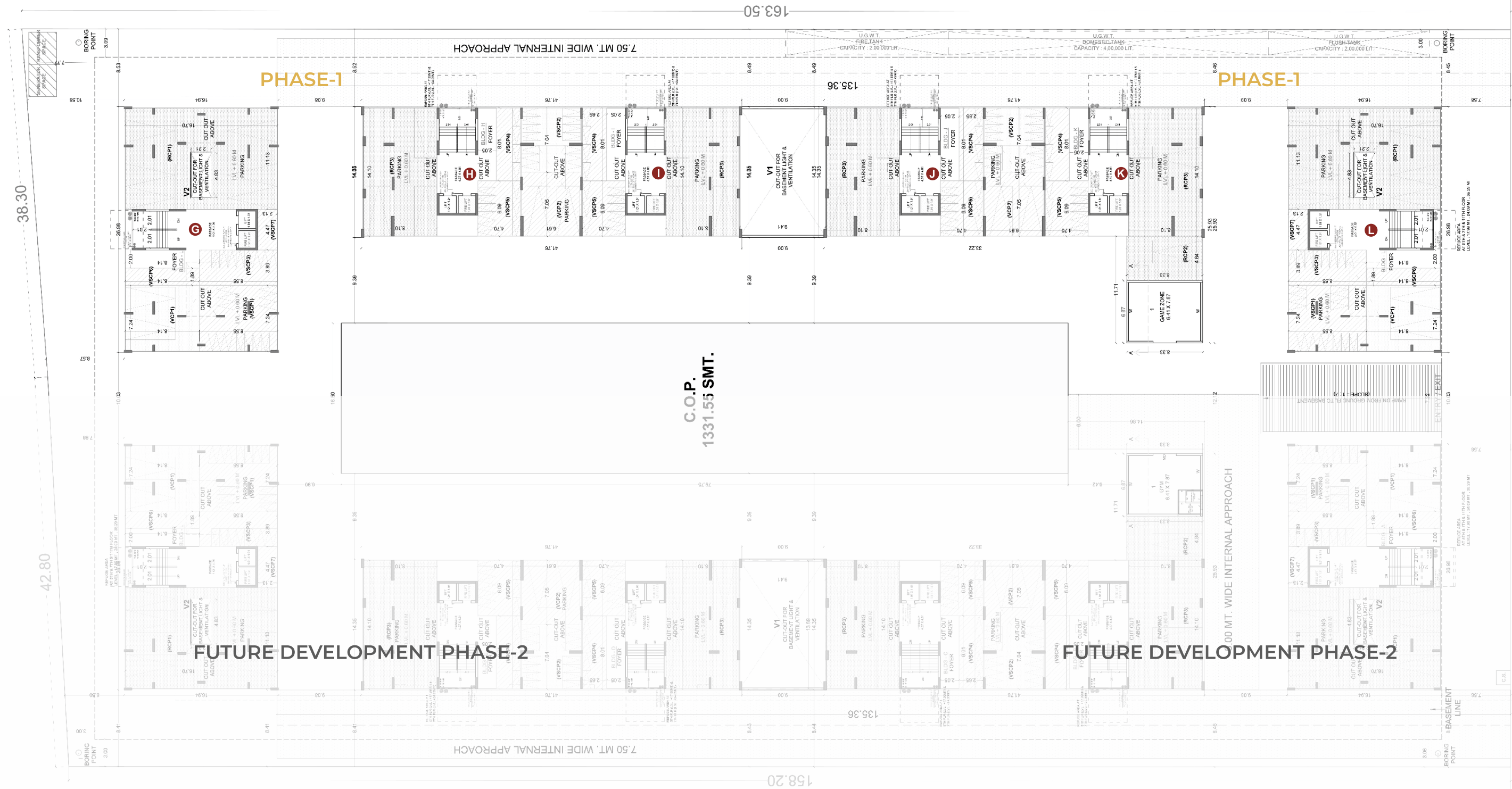


BASEMENT FLOOR PLAN





GROUND FLOOR LAYOUT PLAN



18.00 MT. WIDE ROAD
LVL ± 0.00

BASEMENT VENTILATION CUTOOT SKETCH

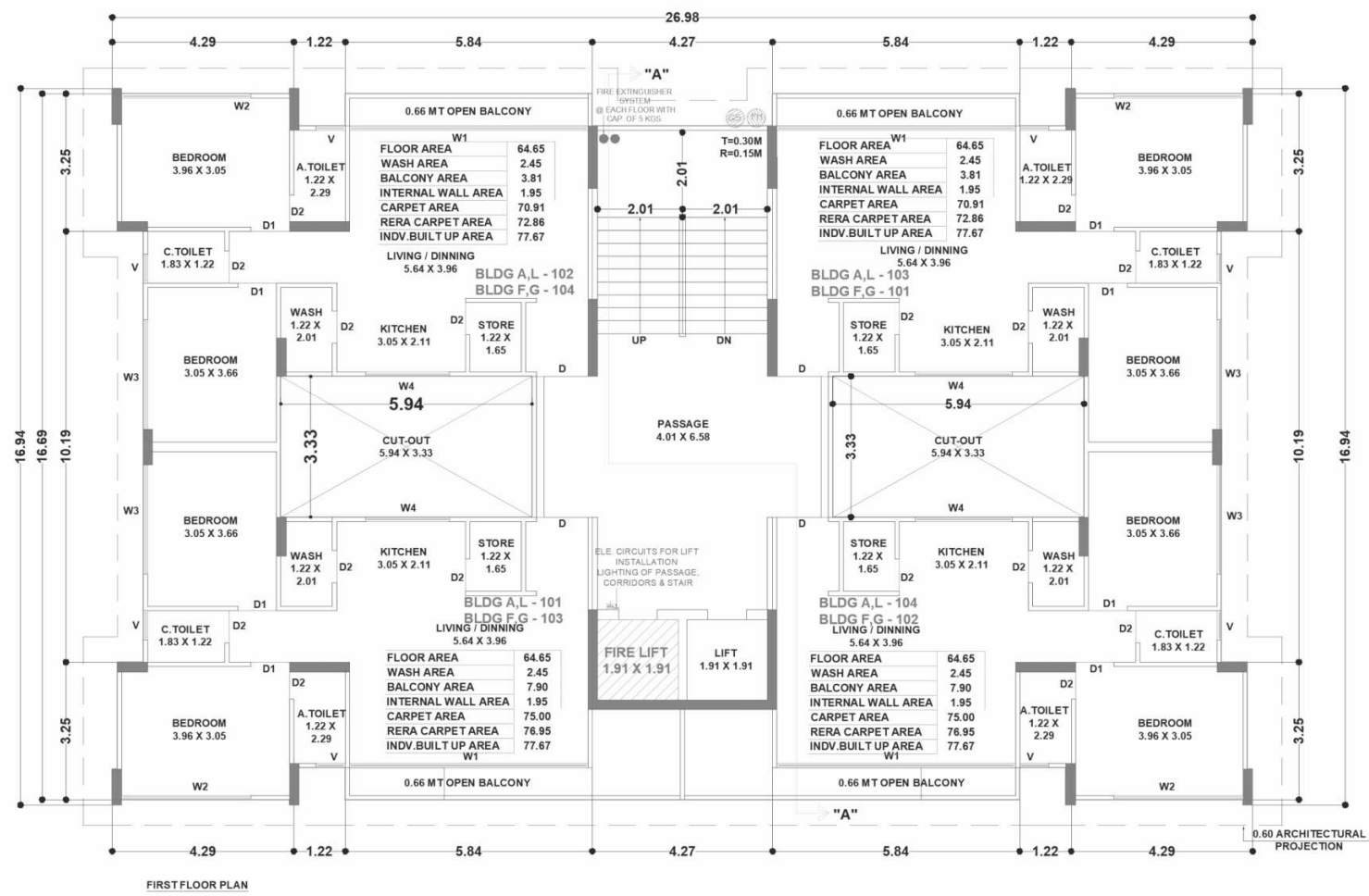


TYPICAL FLOOR LAYOUT PLAN



RAMESHWARAM
IVAAN
PHASE-1

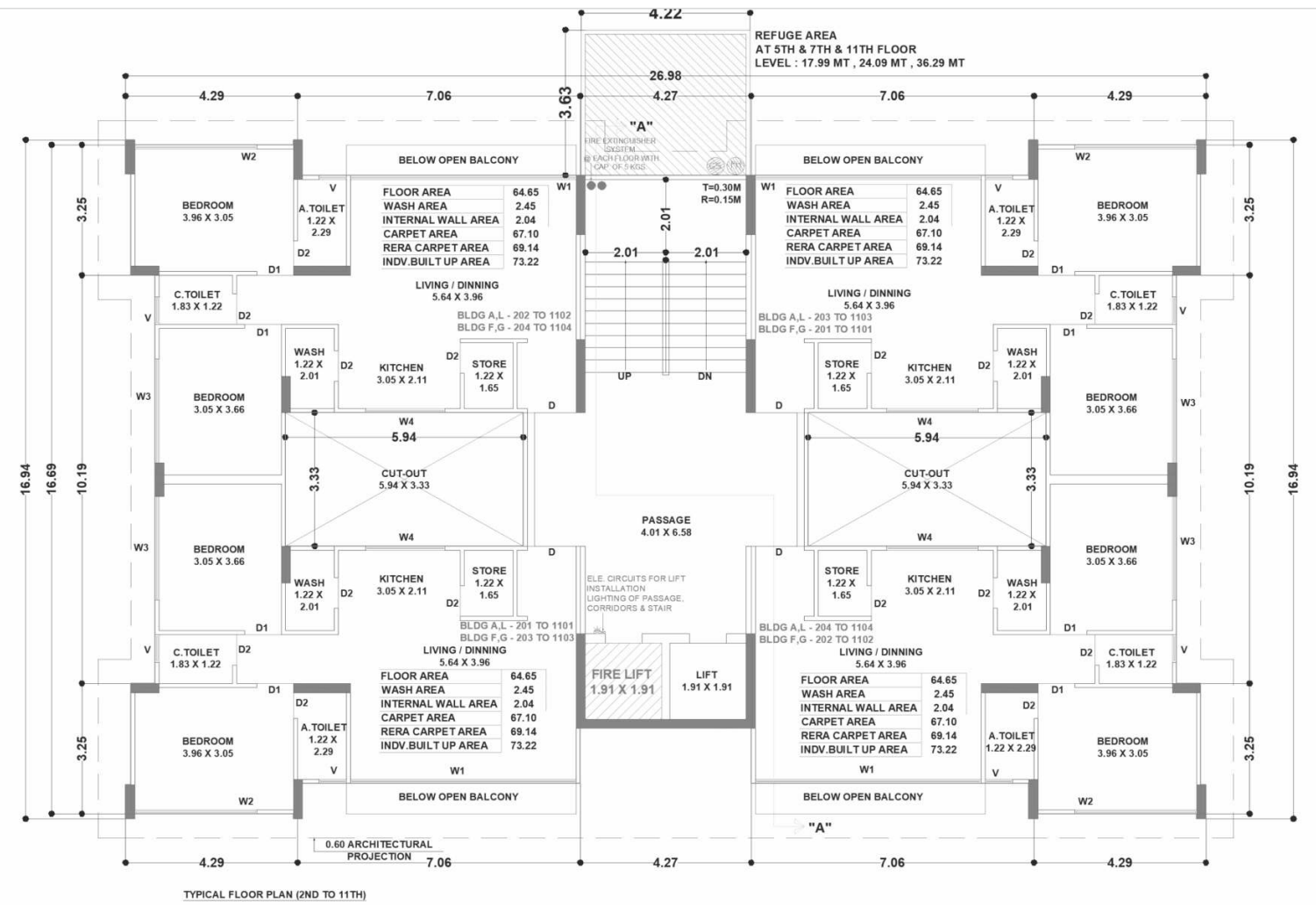




FIRST FLOOR PLAN

N FIRST FLOOR PLAN

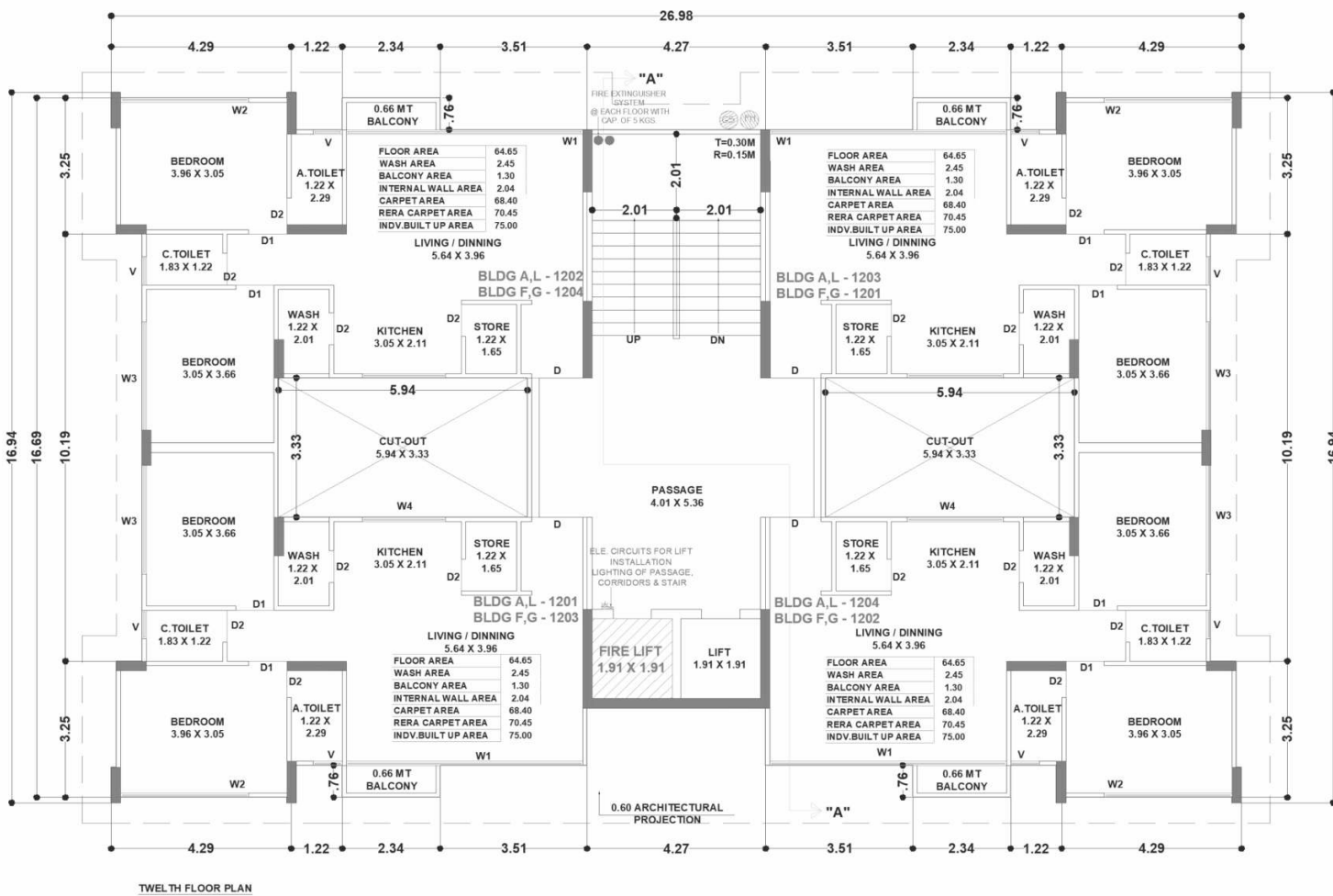
2 BHK
BUILD : L & G



TYPICAL FLOOR PLAN (2ND TO 11TH)

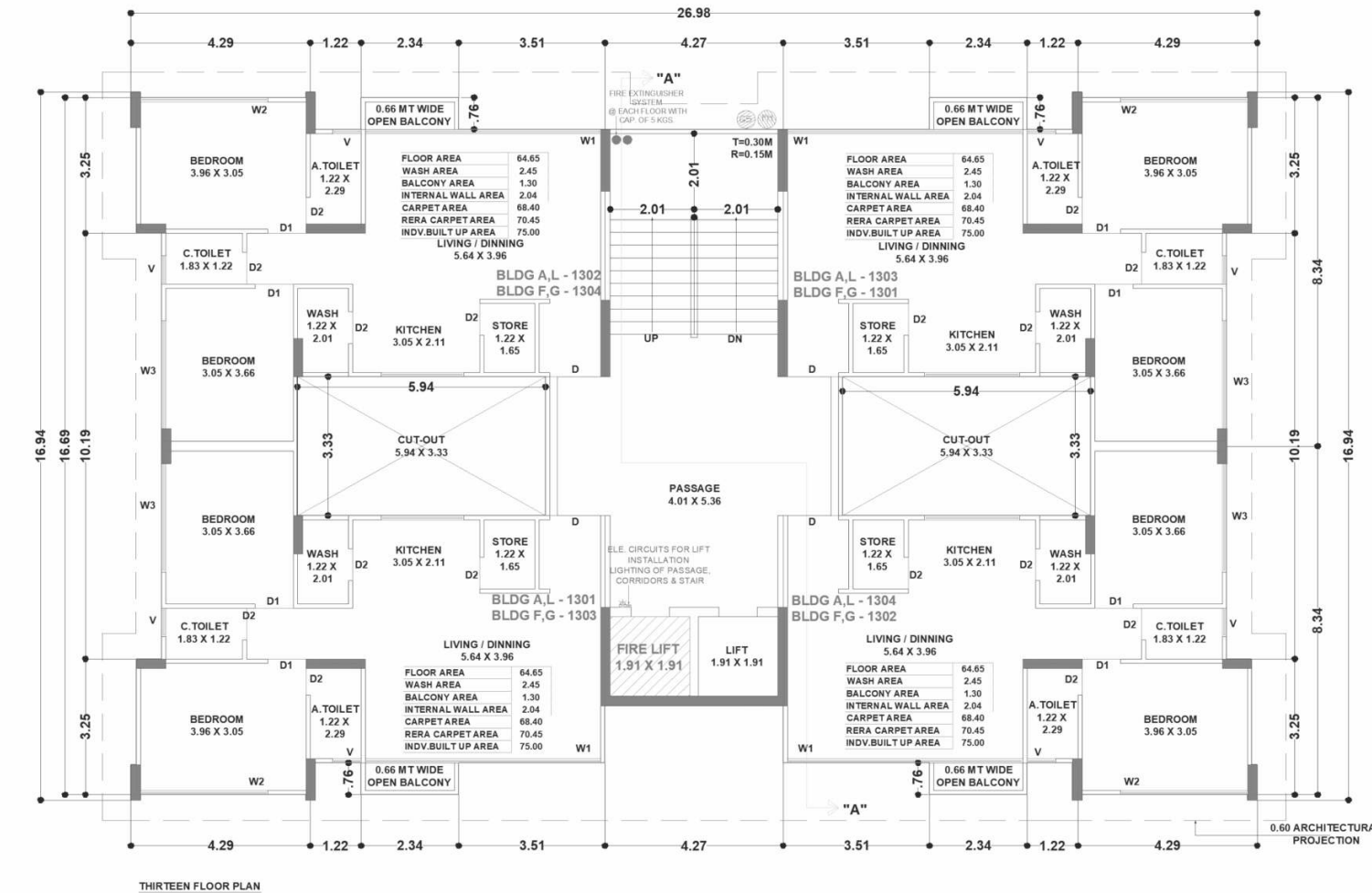
N TYPICAL FLOOR PLAN (2ND TO 11TH)

2 BHK
BUILD : L & G



TWELTH FLOOR PLAN

N TWELFTH FLOOR PLAN



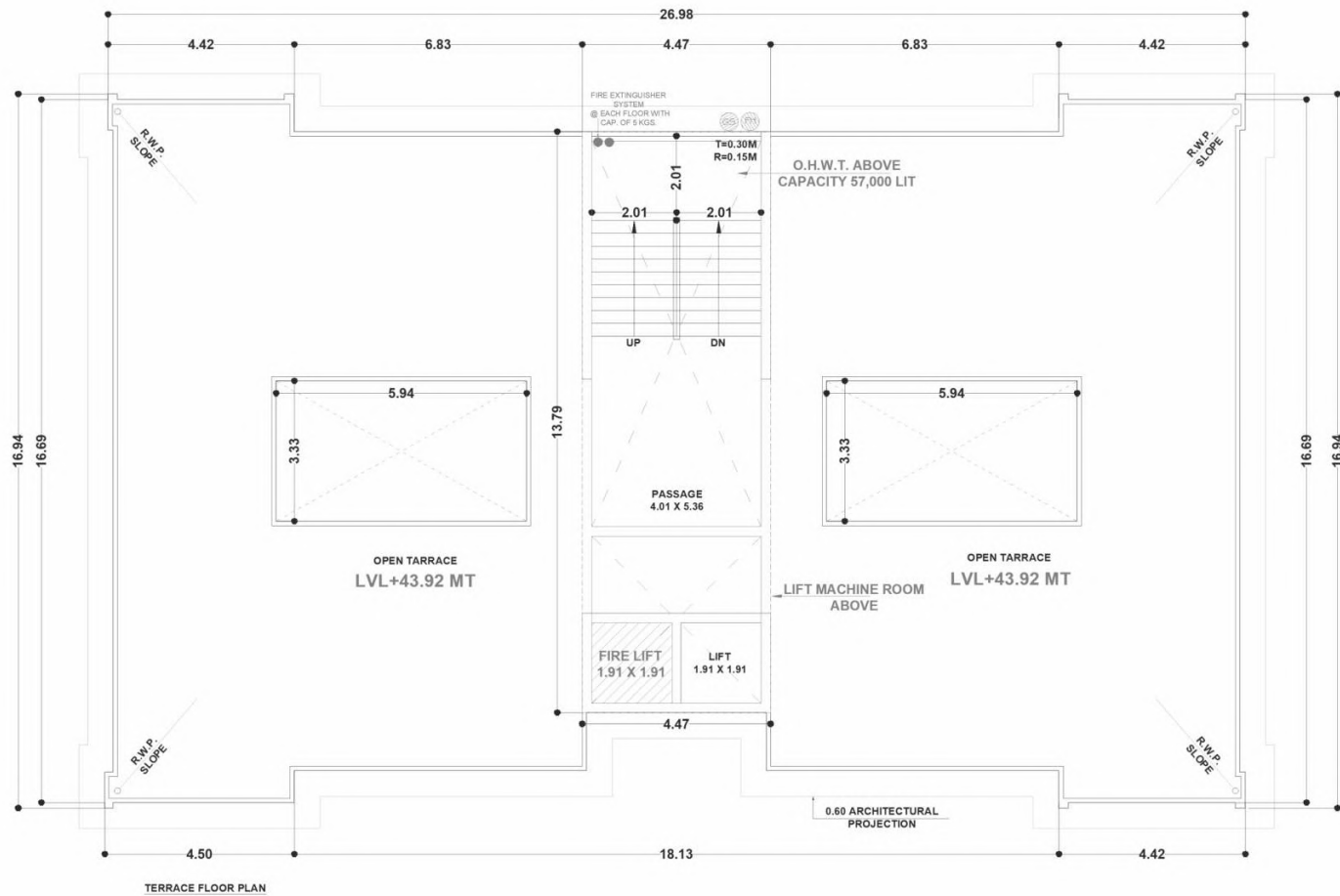
THIRTEEN FLOOR PLAN

N THIRTEEN FLOOR PLAN



2 BHK

BUILD : L & G

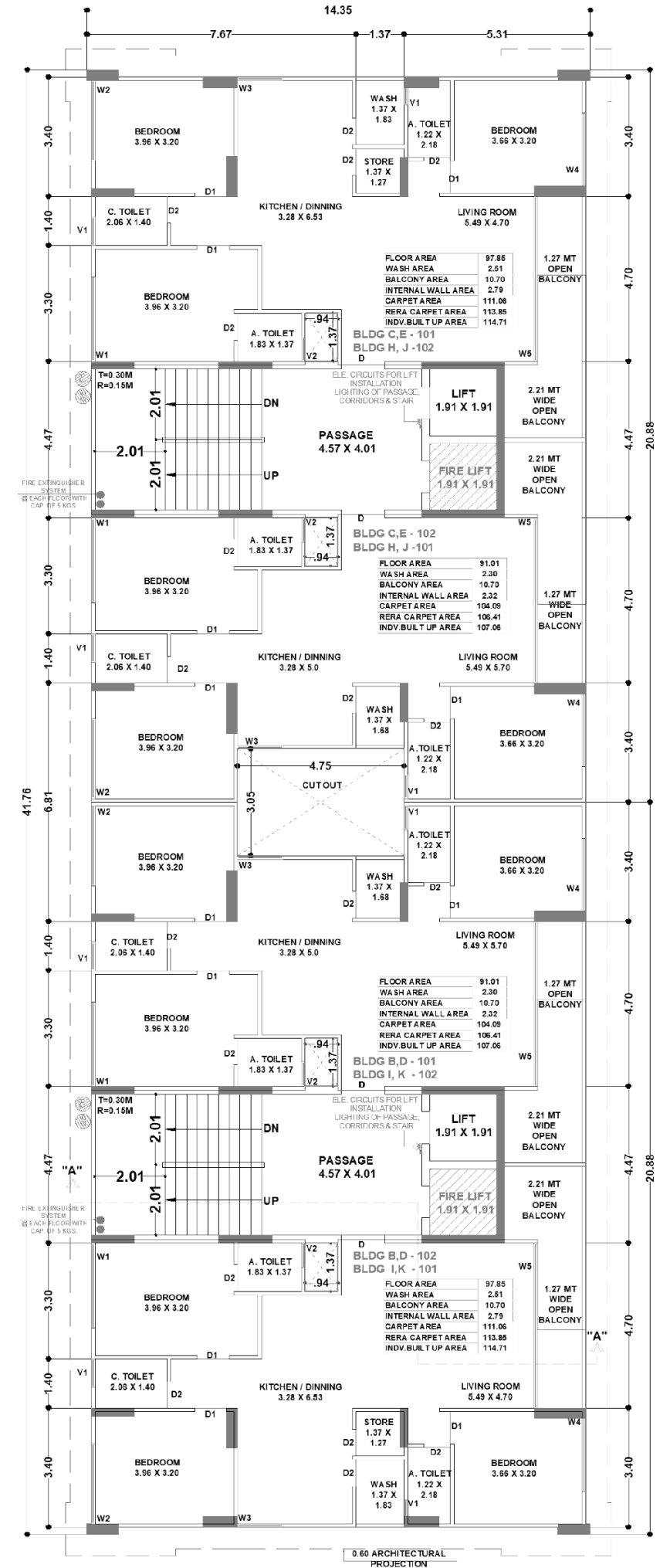


N TERRACE FLOOR PLAN



3 BHK

BUILD : H-I-J-K

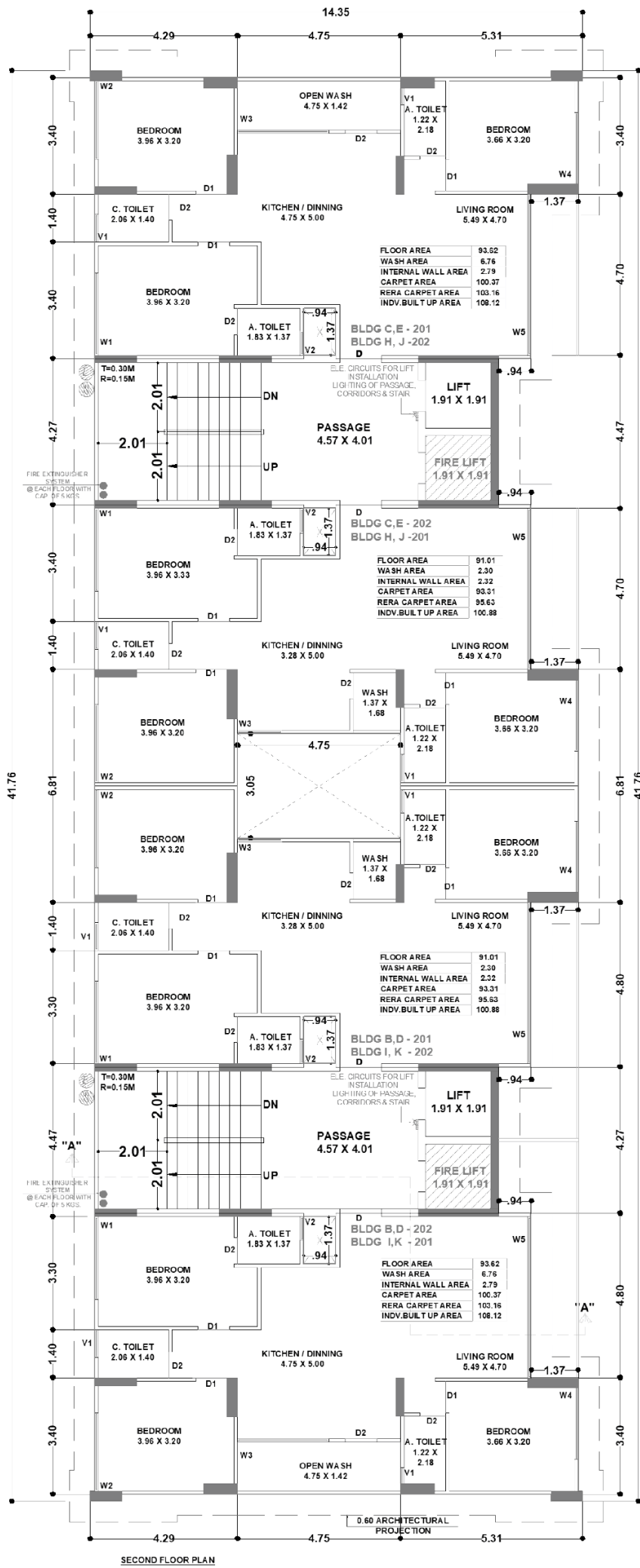


FIRST FLOOR PLAN



3 BHK

BUILD : H-I-J-K



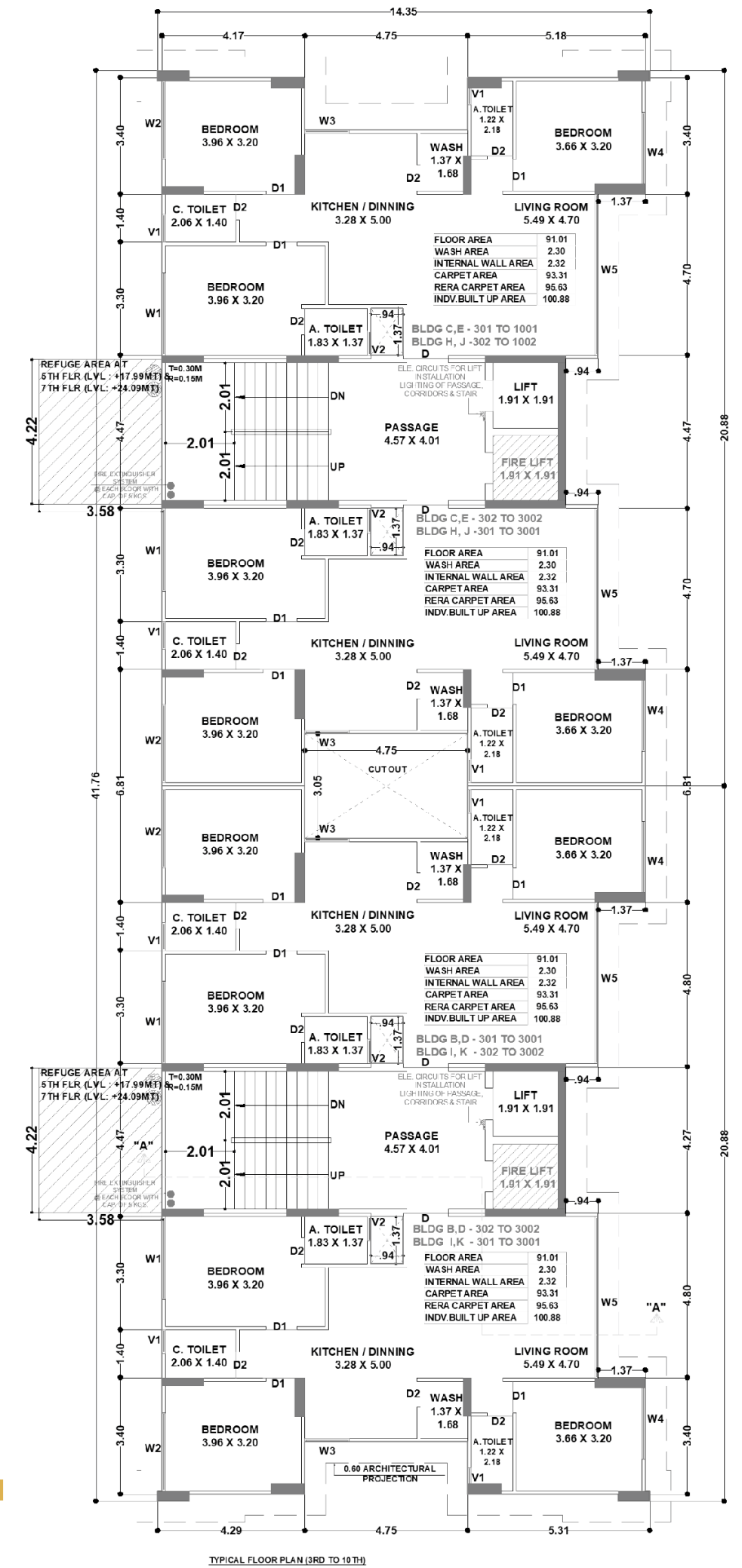
N

SECOND FLOOR PLAN



3 BHK

BUILD : H-I-J-K



N

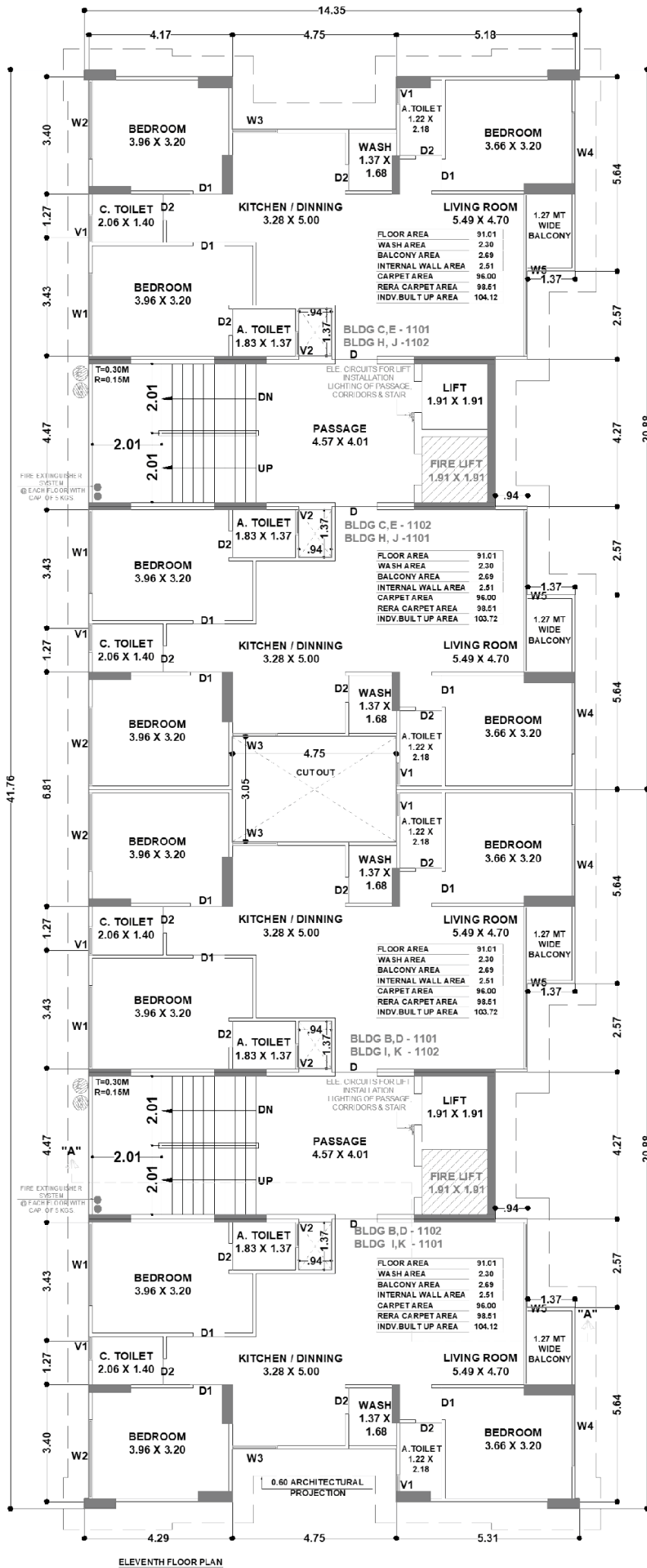
TYPICAL FLOOR PLAN

3rd to 10th



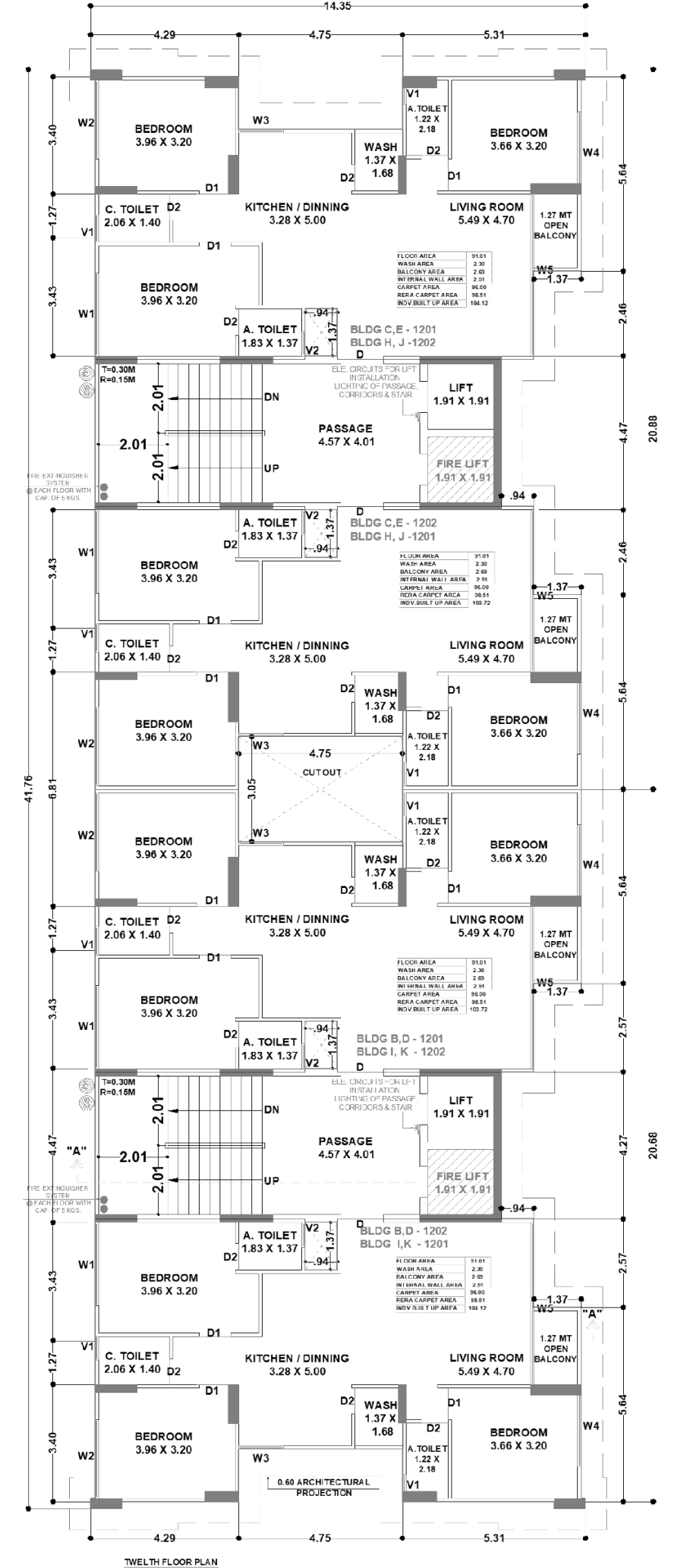
3 BHK

BUILD : H-I-J-K



3 BHK

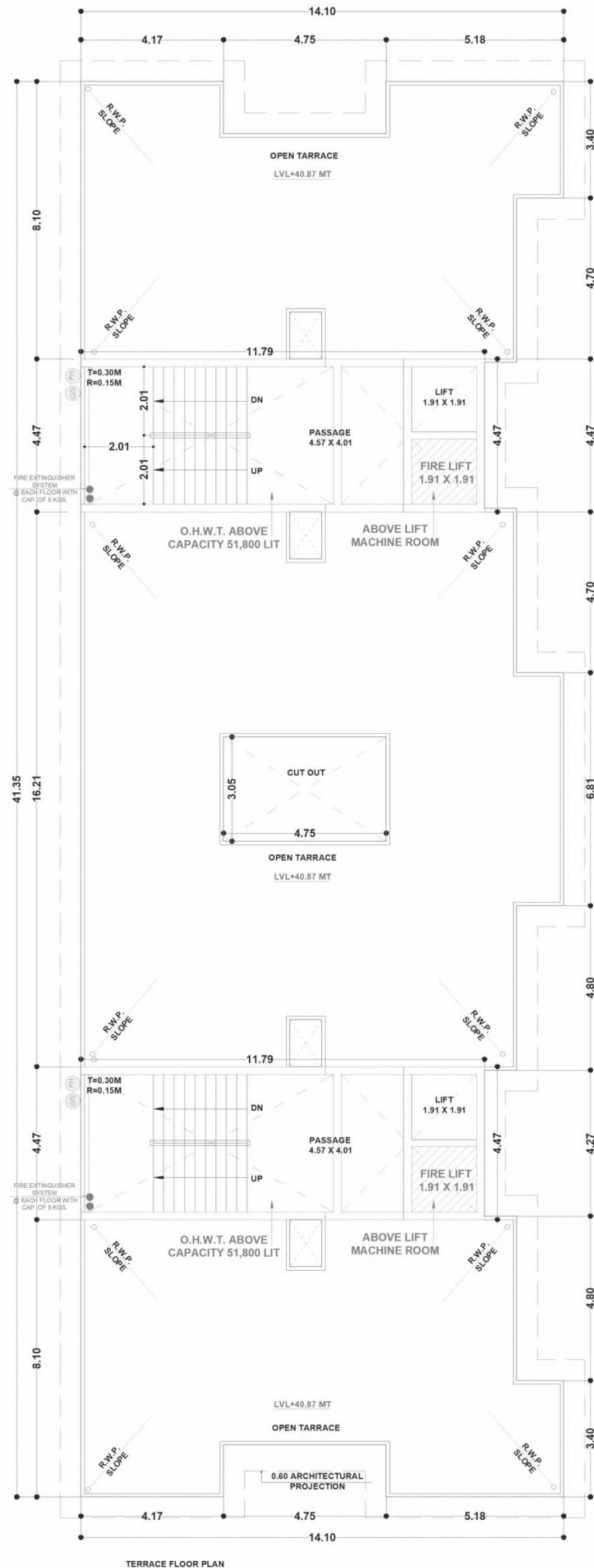
BUILD : H-I-J-K



ELEVENTH FLOOR PLAN



TWELFTH FLOOR PLAN



3 BHK

BUILD : H-I-J-K

N

TERRACE FLOOR PLAN

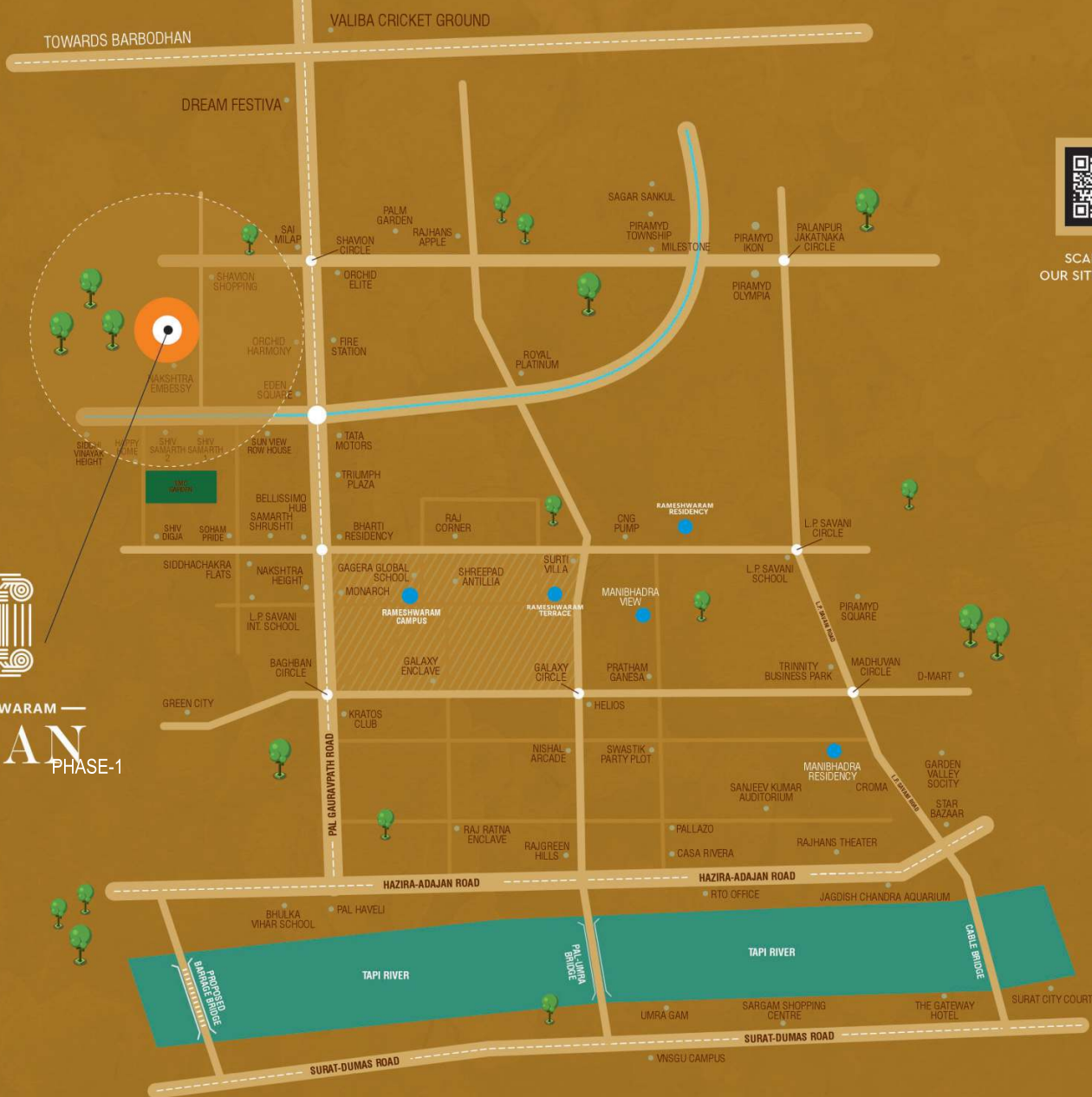
Internal Building Specification

- Flooring**
 - 32" x 32" standard vitrified flooring in living, kitchen and dining area.
 - 24" x 24" vitrified flooring in all bedroom.
- Toilet & Plumbing**
 - Anti-skid tiles flooring and decorative wall tiles up to lintel level.
 - Single lever concealed diverter/mixture with shower and Spout fitting.
 - Standard quality sanitary fitting.
 - European wall hangs WC in all toilet.
 - CPVC / UPVC piping for plumbing.
 - Central geyser point provided in wash area.
- Electrification**
 - Standard quality concealed copper wiring with sufficient point.
 - Convenient provision of AC & TV point in each flats. Provide modular Switches.
- Kitchen & wash**
 - Granite (artificial or natural) platform with standard quality sink.
 - Decorative wall tiles on kitchen platform up to lintel level.
 - Adequate electrical, plumbing and RO point provision in wash and kitchen area.
 - Gas connection 1 point in kitchen & 1 point for geyser.
- Door & Windows**
 - Well Designed main door with wooden frame and premium fitting.
 - laminated flush door with granite frame. Standard hardware fitting.
 - Anodized coated sliding aluminum section windows.
 - Standard single vision reflective glass for heat reduction.
- Internal Wall**
 - Single coat plaster walls with putty finish.

External Building Specification

- Earthquake resistant RCC frame structure design as per norm.
- Double coat sand plaster on external wall.
- Texture on external wall with weather proof paint.
- Firefighting system provided as per norms.
- Silent generator of adequate capacity for elevator, water pump and common facilities in each flats.
- CCTV camera coverage in reception, campus, and basement area.
- Well-designed entrance foyer and elegantly designed lobby at all the floors.
- Well-designed staircase & lift lobby.
- Standard quality fully automated 2 elevators provided for each building.
- SMC water with underground & overhead water tank with adequate capacity.
- Separate bore well for each building.
- Well-designed name plates and notice board.
- MS/GI railing in each flats.





SCAN QR TO
OUR SITE LOCATION

LOCATION MAP

RAMESHWARAM
IVAAN
PHASE-1

DEVELOPED BY



ARCHITECT



STRUCTURAL DESIGNER



Hemant Shukla

SITE ADDRESS

Rameshwaram Ivaan, Block No-209, T.P. 09, F.P. 117, Nr. Shreepad Celebration, Palanpur, Surat - 395009.

BOOKING CONTACT +91 97264 66000 +91 99097 94944